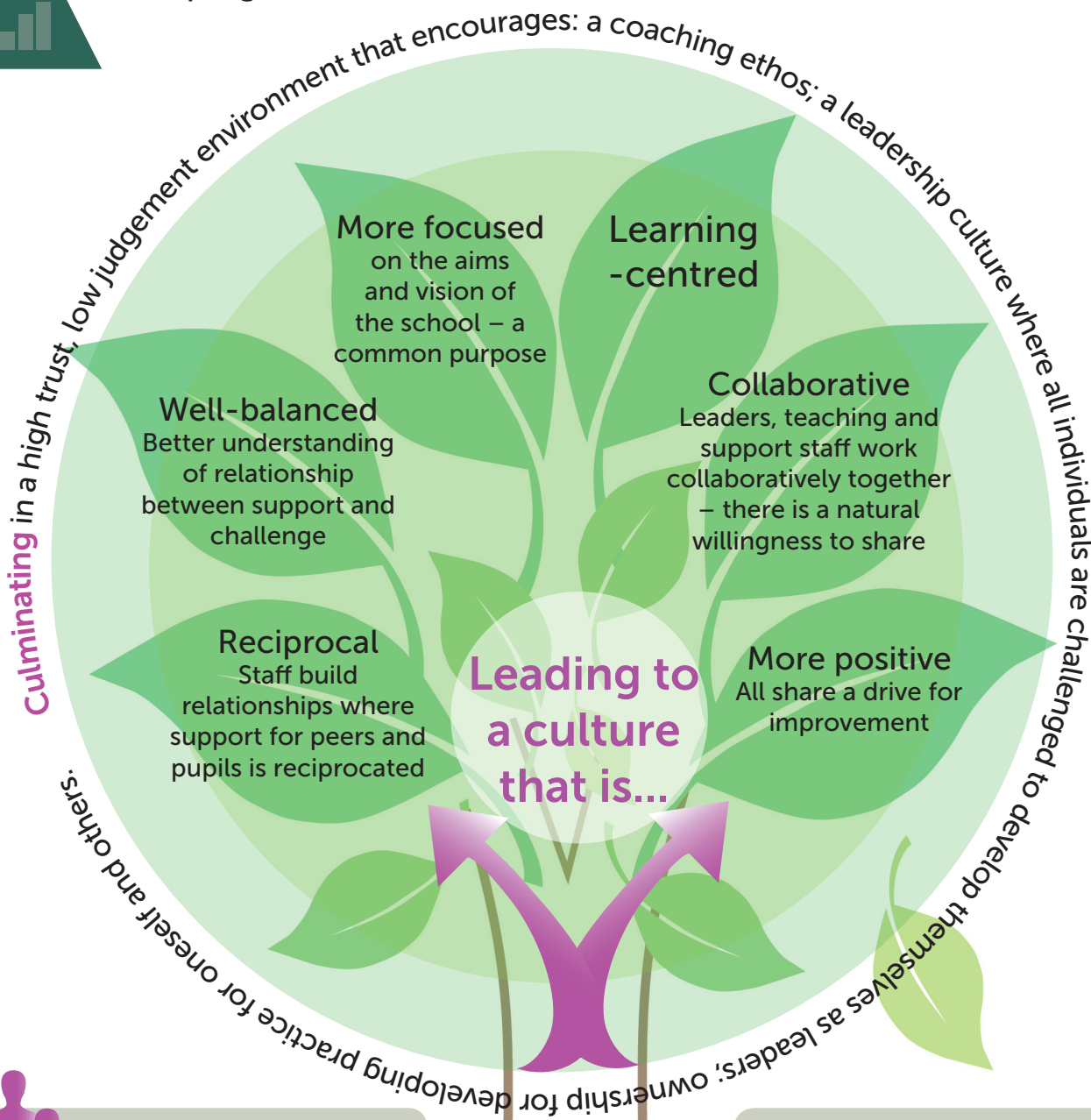




Our Impact: What we are told by schools that have engaged in the OLEVI programmes



Teaching staff say they:

- ▲ Take calculated, well thought out risks in their teaching and are more willing to try new things.
- ▲ Contribute more to the development of the school.
- ▲ Become more self-aware; think for themselves, and act on it.
- ▲ Challenge themselves and each other.
- ▲ Value observing each other teach.
- ▲ Become more confident, motivated and assertive.
- ▲ Have raised expectations of their students and themselves, and other staff too.
- ▲ Grow the confidence to care about what they are accountable for.
- ▲ Are open to becoming better teachers and want to continue to improve and grow their professional practice.



Pupils:

- ▲ Become better learners.
- ▲ Readily and fully engage in challenging learning and high-order thinking.
- ▲ Have their aspirations raised.
- ▲ Become more resilient.
- ▲ Think about how they learn (more reflective)
- ▲ Achieve more highly.

Teaching staff and pupils:

- ▲ Trust themselves and each other.
- ▲ Collaborate and learn together.
- ▲ Feel more courageous and self-assured.
- ▲ Grow awareness of what they are good at.
- ▲ Have higher expectations of themselves and others.
- ▲ Seek out feedback and feed back to others.
- ▲ Take greater levels of ownership over their learning.

